

Opportunities for PhD Studies at James Cook University (JCU) Australia

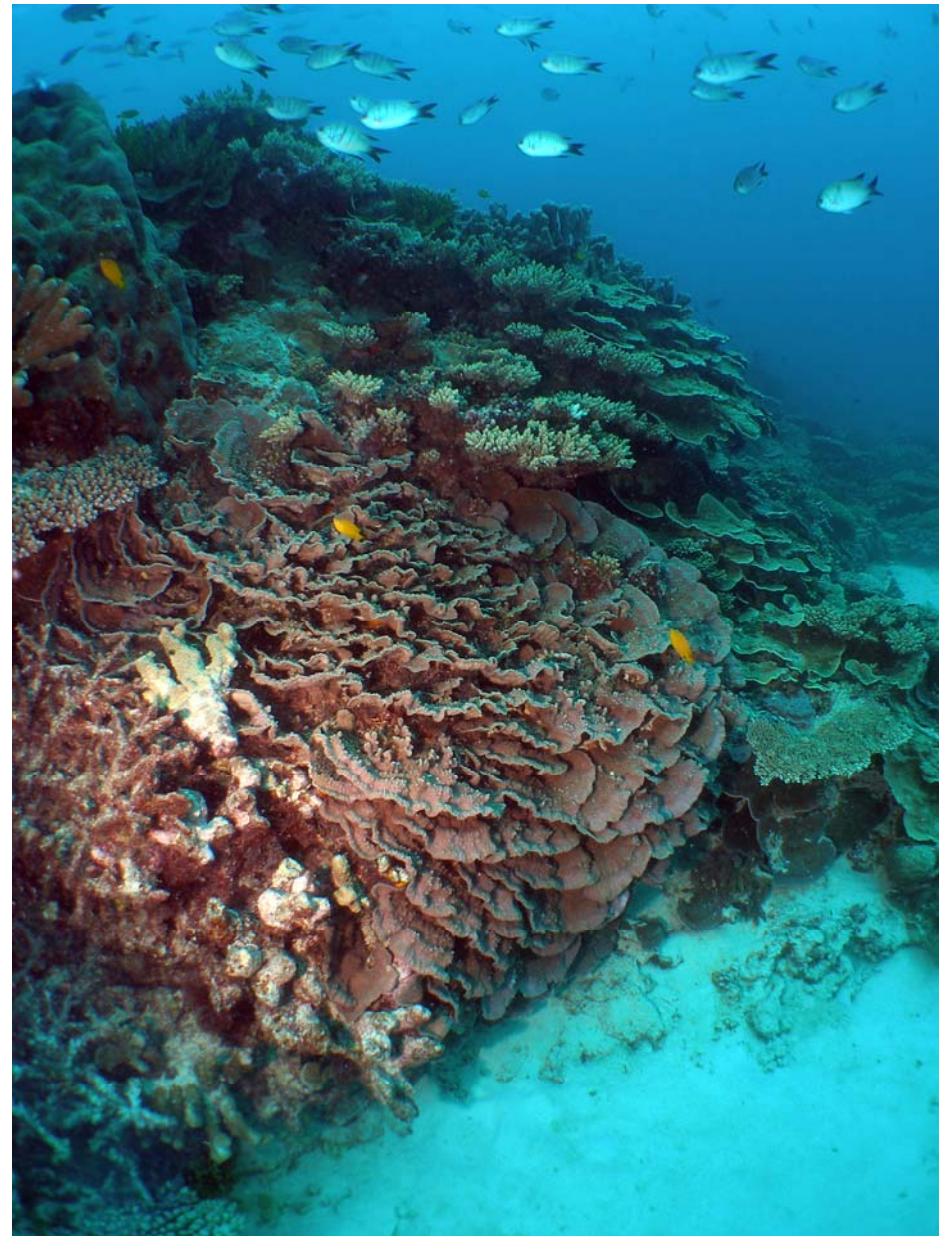
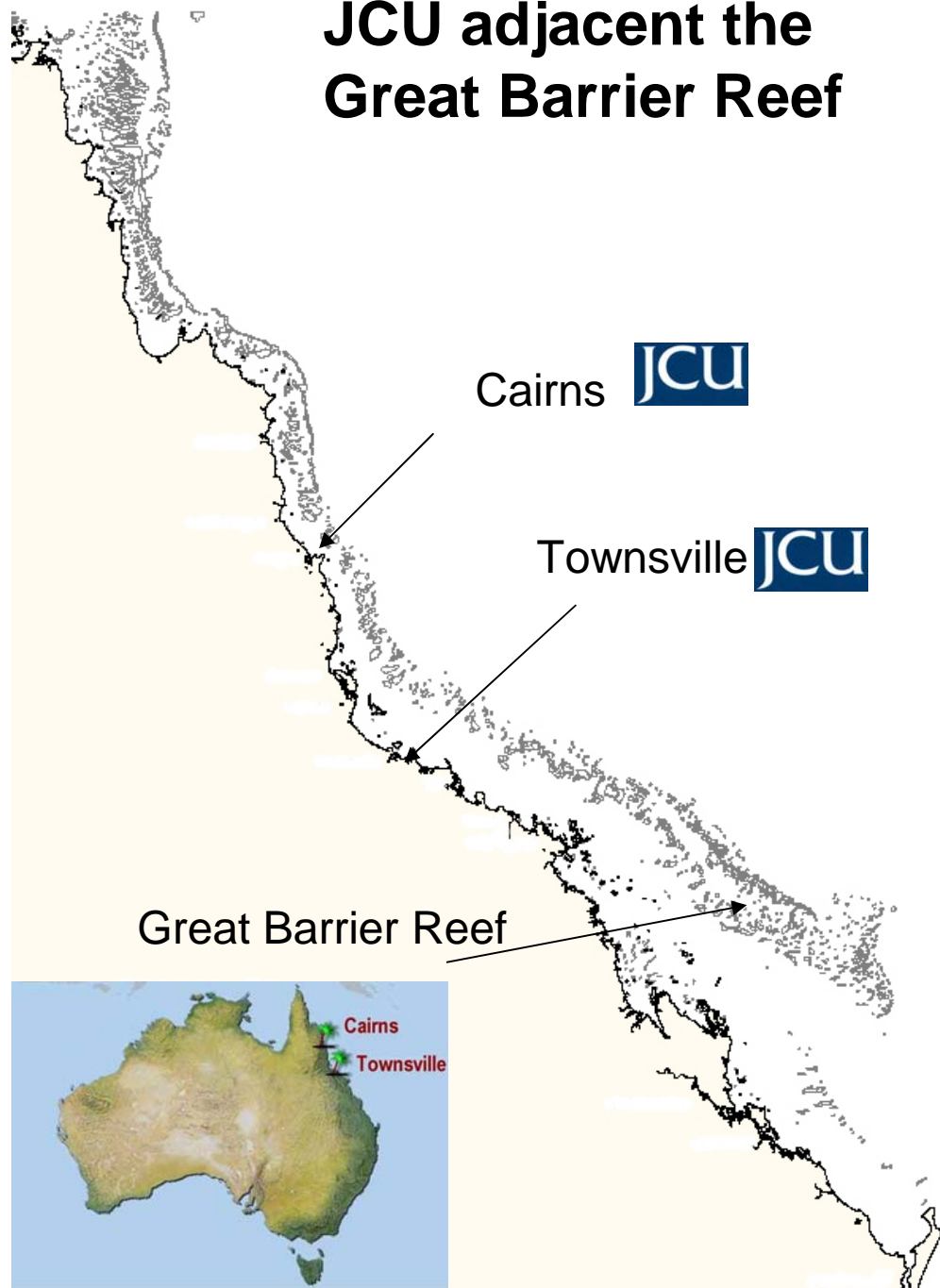
Helene Marsh
Dean Graduate Research Studies

...discover



- Top 300 research champions of the world: Swiss Centre for Studies in Science and Technology
- Top 500 universities in world: 2006 Shanghai Jiao Tong University Academic Ranking of World Universities.
- Australia's pre-eminent tropical research university
- In the Northern Economic Triangle of Australia, the area of substantial growth in mining, processing, agriculture, infrastructure development, and exports (to China!).
- 14,000 students
- International students from 105 countries
- 30% of PhD students from outside Australia

JCU adjacent the Great Barrier Reef



...discover



JCU

JAMES COOK UNIVERSITY

discover

Port of Townsville— JCU near mountains

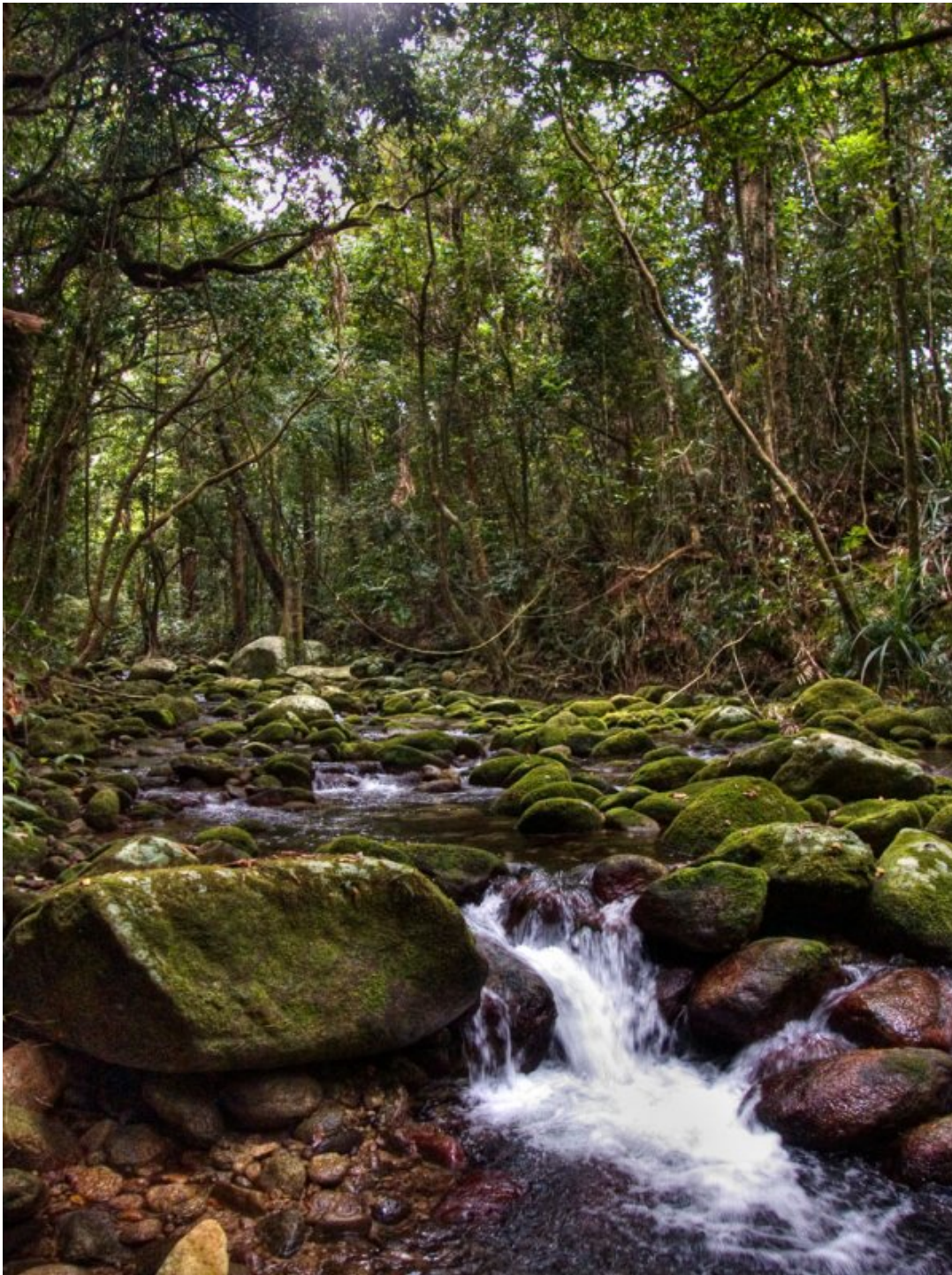


discover

Hinchinbrook World Heritage area near Townsville







Westgid Creek Near Cairns



...discover



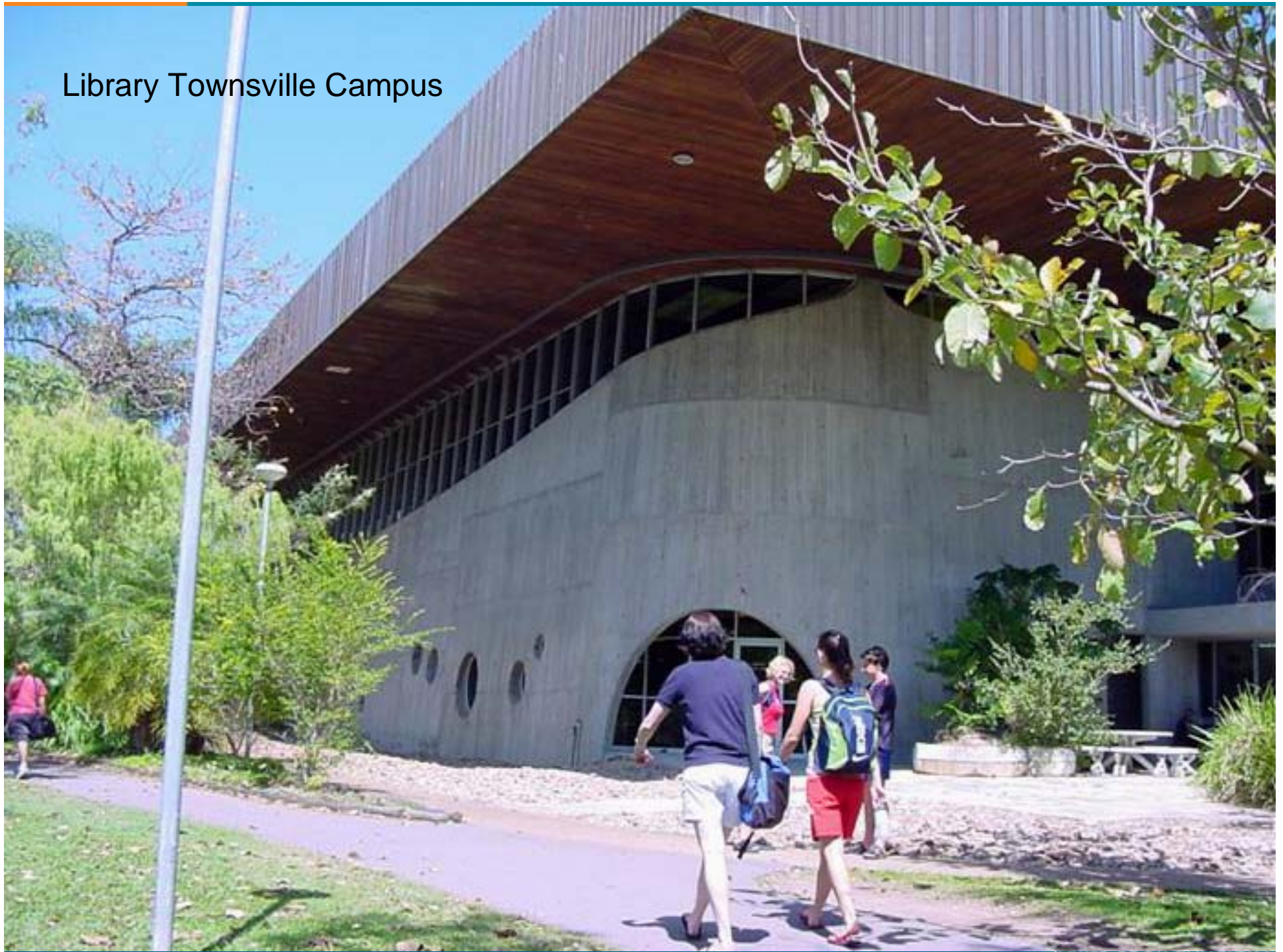
JCU

JAMES COOK UNIVERSITY

Townsville Campus of JCU



Library Townsville Campus





discover

Staying cool on campus



discover



Cairns Campus

...discover



JCU
JAMES COOK UNIVERSITY



JCU

JAMES COOK UNIVERSITY

Examples of research infrastructure at JCU

...discover



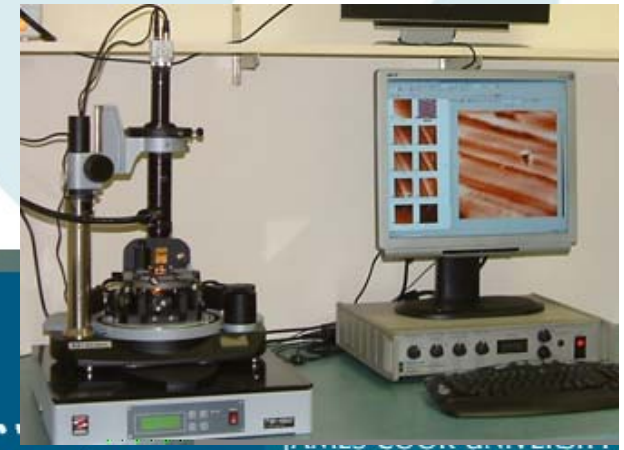
JCU

JAMES COOK UNIVERSITY

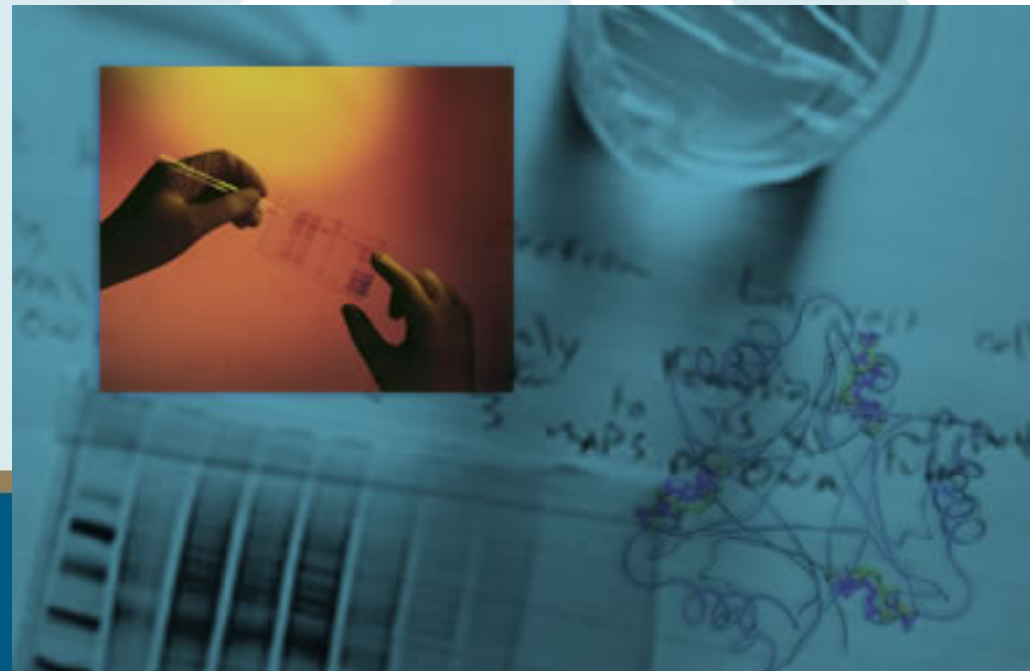
- **X-Ray Diffraction (XRD)**
 - Siemens D5000 X-ray Diffractometer
 - Bruker-AXS Smart 1000 CCD Single Crystal Diffraction
- **X-Ray Fluorescence (XRF)**
 - Bruker-AXS S4 Pioneer X-ray Fluorescence Spectrometer



- **Electron Microscope Facility**
 - EOL JSM-5410LV Scanning Electron Microscope
 - JEOL JXA-8200 Superprobe
 - JEOL 840A Electron Microprobe
- **Laser scanning Confocal Microscopy**
- **Atomic Force Microscopy**



- **Major interest in genomics and bioinformatics**
- **Numerous major labs in science and medicine**
- **Genetic Analysis**
 - Sequencing
 - Genotyping



discover

Orpheus Island research station in the Palm Island Group



...discover



JCU

JAMES COOK UNIVERSITY

Accommodation for 48 at Orpheus Island



discover

Orpheus Island and 9 m *R.V. Challenger*



Ecological experiment



Boats used for research

Clam Aquaculture,
Orpheus Island





Orpheus Island

Dive bay



Lecture theatre for 50



Discussion group area

discover

Aquarium Facility on campus in Townsville



Experimental tanks



Algal scrubbers



Sand filters



RV Kirby



Shared facilities with Australian Institute of Marine Science

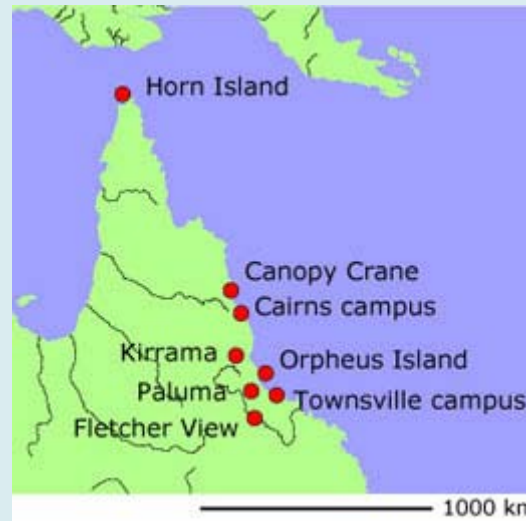


**Controlled Environment
Facility and Aquashed
AIMS@JCU**

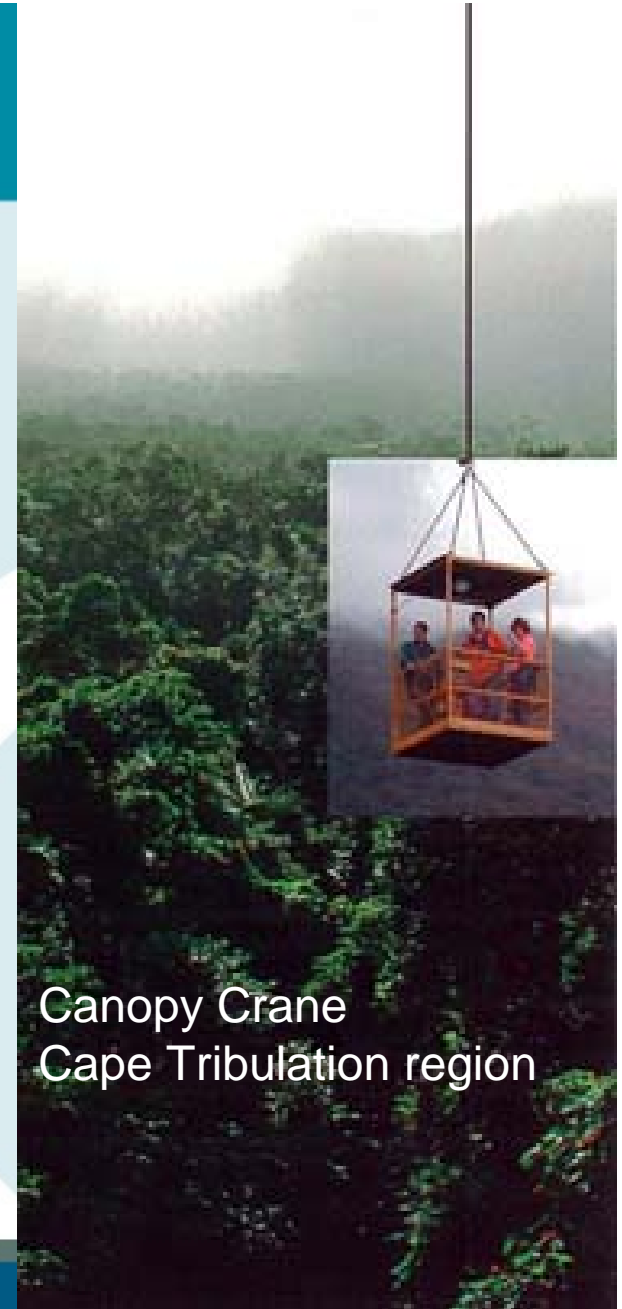
**A bus takes PhD students
between JCU and AIMS**



Shade houses & Agriculture research facilities



Controlled
Environment
Centre



Canopy Crane
Cape Tribulation region

...discover



Fletcherview
Research
Station

Paluma Research
Station



Students in the
field at Paluma



Accommodation

- On Campus – Townsville
- There are about 1800 beds on campus.
- PhD students often share houses in the surrounding districts

discover

Rotary International House



University Halls



PhD at JCU

- Minimum of 3 years
- Structured program tailored for individual students
- Thesis externally examined by international experts

JCU Research Training Mission:
Internationally competitive graduates who
their employment goals in industry,
academia and research institutions

PhD sandwich program

- Research partnership between JCU and international university
- Terms of PhD candidature negotiated between the two institutions: course structure, supervision, thesis format, examination etc
- Candidate spends time at both universities
- Degree awarded jointly by both institutions
- Candidate eligible for some Australian and Chinese scholarships

- Confirmation of candidature first six months
 - Proposal
 - Proposal seminar
 - Significant writing
- Annual report
- Pre-completion seminar (6 months before thesis submission)

Research skills program

- Writing groups
 - Literature review
 - Publishing
 - Grant proposal writing
- Powerpoint
- Statistics courses and support
- Information retrieval
- Project management
- Endnote
- Research ethics
- Coursework if required

Students develop plan with **supervisory team**

...discover



JCU

JAMES COOK UNIVERSITY

- Program of weekly support for International Research Students to assist with Confirmation of Candidature Process
 - Proposal writing
 - Seminars
 - Literature reviews
- Offered each semester

Scholarships with stipend and tuition fees

- International Postgraduate Research Scholarships (IPRS)
- Endeavour Postgraduate Awards
- Australian Leadership Awards
- AUSAID scholarships

<http://www.jcu.edu.au/office/grs/scholarships/index.html>

- China Scholarship Council Awards (CSC)
 - Partnership Agreement Awards
 - 985 Awards (BIT eligible university)
- James Cook University Postgraduate Research Scholarships (JCUPRS)

discover

Meet some Chinese PhD students at JCU



...discover

Zengqiang Qian from Zhejiang Province

- Discipline: Genetics (Zoology)
- PhD Title: Evolution of Social Structure in the Ant Genus *Myrmecia*
- Australian Leadership Award
- Supervisor: Professor Ross Crozier
- BSc & MSc: Northwest University (Xi'an, Shaanxi Province)



Yadan Mao from Wuhan

- Discipline: Engineering
- PhD title: Pollutant transport in the nearshore waters of lakes and reservoirs
- CSC scholarship
- Supervisors: Dr Chengwang Lei and Professor John Patterson
- BSc @ MSc China University of Geosciences, Wuhan



Jing Li from Shaanxi Province

- Discipline: Tourism
- PhD title: The role of the form shops in tourist shopping decisions and experience at cultural world heritage sites
- CSC scholarship
- Supervisor: Professor Philip Pearce
- Masters from Dalarna University Sweden.



Huibin Zui from Qingdao City

- Discipline: Biochemistry
- PhD title: Genome-wide screening and analysis of *Acropora millepora* immune related genes by EST microarrays
- Supervisor: Professor David Miller
- CSC scholarship
- MSc: Ocean University of China



JCU areas of research strength

- Disaster Studies: global climate change*
- Earth Sciences
 - Marine Geology*
- Education
- Engineering* (Chemical, Civil and Environmental, Electrical and Computing, Mechanical)
- Environmental Science and Management*
- Marine Science*, particularly Marine Biology* (JCU is first in the world for coral reef studies)
- Molecular Sciences*
- Social Sciences *
- Tourism
- Tropical Biology and Conservation*
- Tropical Freshwater Research*
- Tropical Health and Medicine*

***985 Scholarship
Favorably-sponsored area**

Aquaculture

- Mud crabs
- Crustaceans
- Bivalves including pearls
- Marine biotechnology
- Chemical signals in biological interactions
- Marine biofouling
- Larval settlement cues
- Sustainable and integrated aquaculture systems



Fish and Fisheries

Reef and Inshore fish

- Biology and life history
- Effects of fishing
- Movement patterns
- Stock structure
- Effects of removal of sharks

Socio-economics

- Socio-economic impact of rezoning
- Economic impact of charter fishing
- Socio-economic impact of vessels relocating home ports



- [illegible]

Coral Reef Studies

- Australian Research Council Centre of Excellence
- World's most highly cited reef scientists including Director Professor Terry Hughes

Program 1: Evolutionary and environmental change

Program 2: Understanding and managing coral reef biodiversity

Program 3: Marine reserves and reef connectivity

Program 4: Genetic, molecular and physiological processes

Program 5: Resilience of linked social-ecological systems



Marine Wildlife

- Genetics
- Life history
- Satellite tracking
- Climate change
- Distribution and abundance
- Spatial ecology
- Risk assessment



Disaster Studies

- Disaster Integrated Landuse Planning
- Understanding Communities & Fire
- Natural Hazard Mitigation
- Cyclones & Floods
- Community Vulnerability & Resilience
- Women & Disasters
- Tourism & Disasters
- Natural Hazard Education



More information

<http://www.jcu.edu.au/office/grs/interchina.html>

Questions?